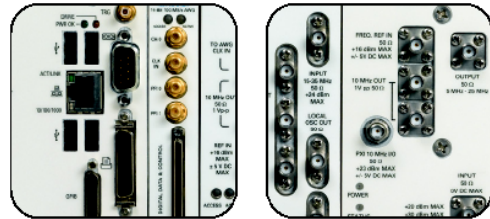


## Dual simultaneous RF signal generator for flexible Radio & GPS Receivers Test.

WisYPlay fully interprets the software defined radio paradigm and operates in combination with a wide variety of radio modulation software (e.g., WisYGPS, WisYRDS, WisYDAB, NI GPS,..) allowing the simultaneous play of two customer's choice radio streams over **two independent RF channels**.

WisYPlay allows to perform simultaneous testing over two independent RF receivers/devices, even of different kind, and to perform receivers intermodulation and selectivity tests in one instrument.

The extreme flexibility of WisYPlay solution allows to change on-the-fly modulation formats so as to make the solution extremely suitable in the manufacturing, quality insurance and R&D contexts.



WisYPlay offers the software flexibility to swing among different modulations, baseband contents output power and frequency.

Each signal can also be played, stopped, paused and re-played at any time.

WisYPlay manages up to two independent real-time channels by generating two different and independent RF waveforms.

WisYPlay supports PXI Backplane triggers for easy measurement synchronization.

### Features & Benefits

- Cost and space saver solution
- Simultaneous generation of two independent channels/modulation radio streams.
- Real-time waveform streaming from disk.
- Easy integration with all WisyTech modulation packages.
- APIs for custom application within the NI LabVIEW® framework.

**WisYPlay** has the ability to manage real-time waveforms **streaming** from the host computer disk, thus allowing for a **long waveforms play time**.

**WisYPlay** includes both LabVIEW® **VI's** and a stand-alone **Test Panel** executable.

The Test Panel allows the user to immediately start to play any waveform at whatever RF Power and frequency.

**WisYPlay** supports the following National Instruments RF hardware configuration:

or 2 NI PXI-5610 (RF Upconverter)

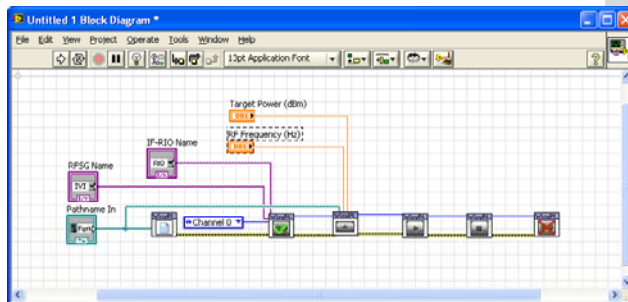
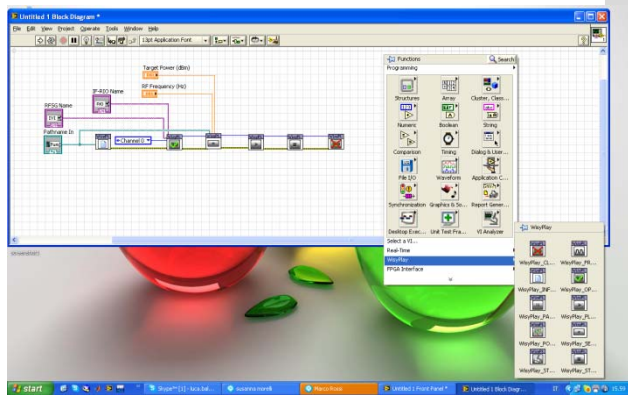
NI PXIe-5641R (IF-RIO Transceiver)

## RF Specifications Summary

RF Power Range:	-140 dBm to +10 dBm
RF Frequency Range:	250 kHz to 2.7 GHz
lock stability:	better than 0.1 ppm;
RF Power Accuracy:	+/- 1 dB;
Frequency Resolution:	1 Hz
Spurious :	maximum -40 dBc (Second Harmonic)



For more hardware detail, see also the NI PXI-5610 RF Upconverter and the NI PXIe-5641R IF Transceiver datasheets.



**wisytech**

Spin-off Politecnico di Milano

[www.wisytech.com](http://www.wisytech.com)



Authorized Agent/Distributor

**Alfautomazione S.p.A.**

[www.alfautomazione.com](http://www.alfautomazione.com)

WisYtech Srl - all rights reserved

WisYtech reserves the right to change product specifications without notice.

"CVI/LabWindows", "LabVIEW" and "TestStand" are registered trademarks of National Instruments Corporation.